



Kanetora

COMPANY

PROFILE

KANETORA VIETNAM JOINT STOCK COMPANY

KANETORA VIETNAM JOINT STOCK COMPANY

HQ: Cau Mai, My Thinh Commune, My Loc District, Nam Dinh Province, Vietnam

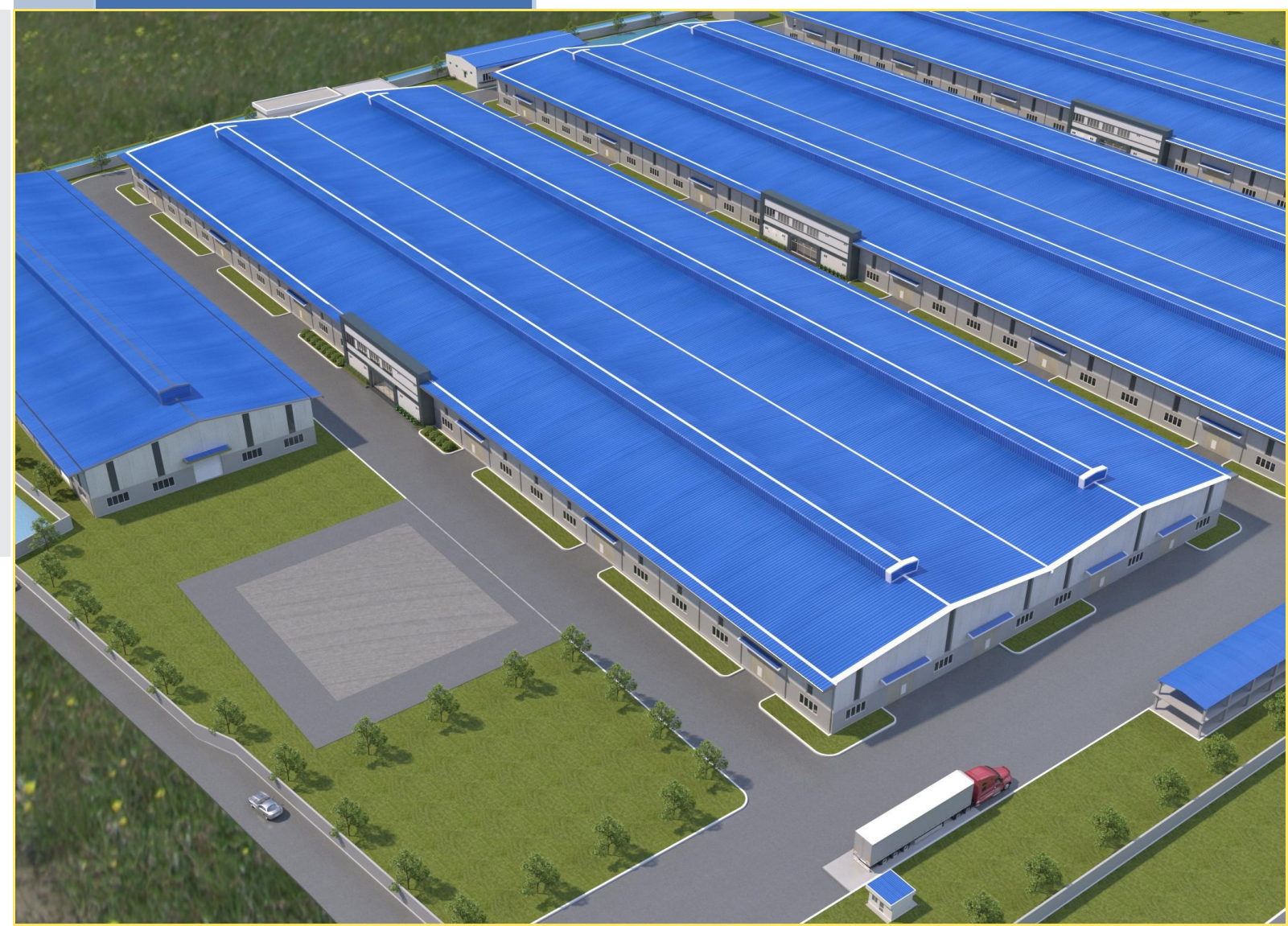
Add: 23rd floor, Discovery Complex Building, 302 Cau Giay Street,
Dich Vong Ward, Cau Giay District, Hanoi, Vietnam

Tel: +84 (0) 24 7303 3998

Email: sales@kanetora.vn

info@kanetora.vn

Website: www.kanetora.vn



OPEN LETTER



Dear Customers and Partners!

First and foremost, KANETORA VIETNAM JOINT STOCK COMPANY would like to send to our customers & partners the respectful greetings, best wishes and deepest thanks for your attention to us.

KANETORA VIETNAM JOINT STOCK COMPANY was established in September 18th, 2018, granted by Nam Dinh Department of Planning and Investment. We are specialized in producing and supplying: Plastic bead, Jumbo bag, Sling Bag, etc. We can also supply industrial plastic packing according to customer's request.

With high quality materials, advanced production equipment and up-to-date technology, operated by a staff of professional engineers and mechanics, our company has brought out to the market many kinds of products with excellent quality.

We promised to bring our customers satisfaction through providing the best quality products.

KANETORA VIETNAM hopes to receive your attention and cooperation in the future!

Best regards!



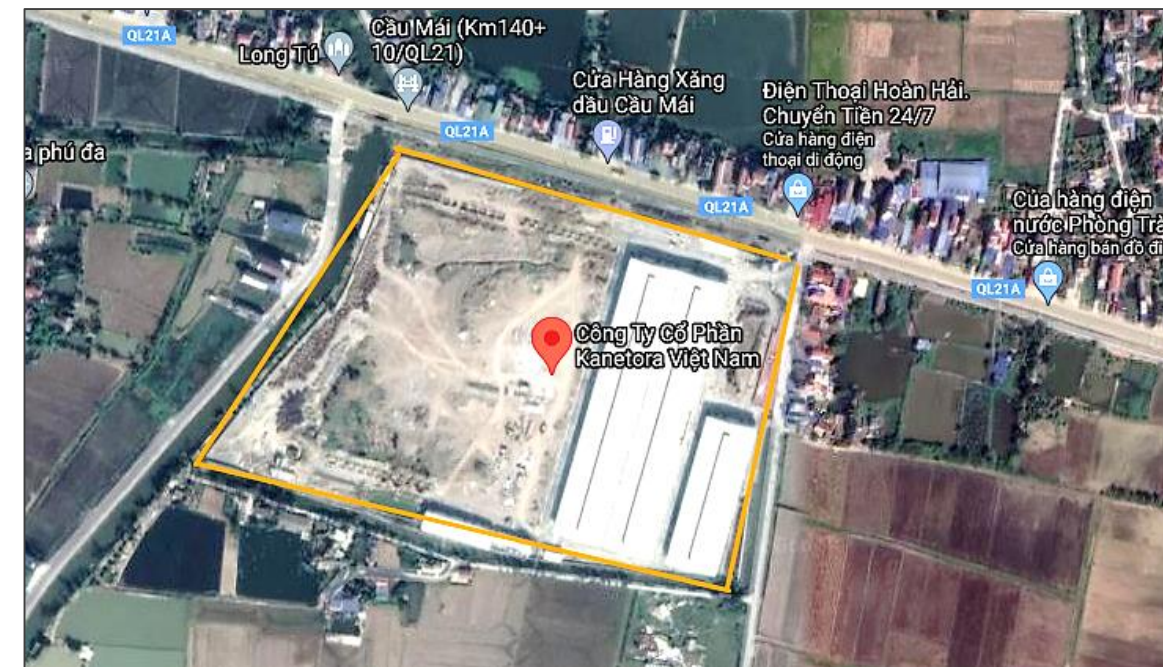
COMPANY INFORMATION

COMPANY NAME

KANETORA VIETNAM JOINT STOCK COMPANY

HEADQUARTER: Cau Mai, My Thinh Com., My Loc Dist., Nam Dinh Prov., Vietnam**OFFICE:** 23rd FL, Discovery Complex Building, 302 Cau Giay Street, Dich Vong Ward, Cau Giay Dist., Hanoi, Vietnam**TEL:** +84 (0) 24 7303 3998**EMAIL:** sales@kanetora.vn / info@kanetora.vn**WEBSITE:** www.kanetora.vn**TAX ID:** 0601163418**LEGAL REPRESENTATIVE:** Mr. **Pham Minh Duc** (General Director)

GENERAL INFORMATION



Cau Mai, 21A Highway, My Thinh Commune, My Loc District, Nam Dinh Province, Vietnam.

<https://goo.gl/maps/aUrfHKThZVVcnpUy8>

Located in the centre of the Northern Delta of The Red River, belongs to the Northern key economic triangle of Ha Noi – Hai Phong and Quang Ninh

**Hai Phong International Sea Port**

100 km | Along QL10

**Noi Bai International Air Port**

100 km | Along CT01

**Cat Bi Air Port**

113 km | Along QL10

**Ha Noi Capital**

77 km | Along CT01



COMPANY INFOMATION

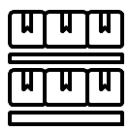
KANETORA VIETNAM JOINT STOCK COMPANY



GENERAL INFOMATION



Total Area Square 83,942 sqm



Designed Capacity
300,000 bags/month



1 Sewing Workshops
Area Square 11,000 m²



Main Work Shop System



Yarn Formation



Coating, Cutting, Printing



Weaving



Sewing

PRINCIPLES



TO CUSTOMERS
Working with the best of our ability for customers' benefit.



TO EMPLOYEES
Putting interests of employees on par with interests of the Company.

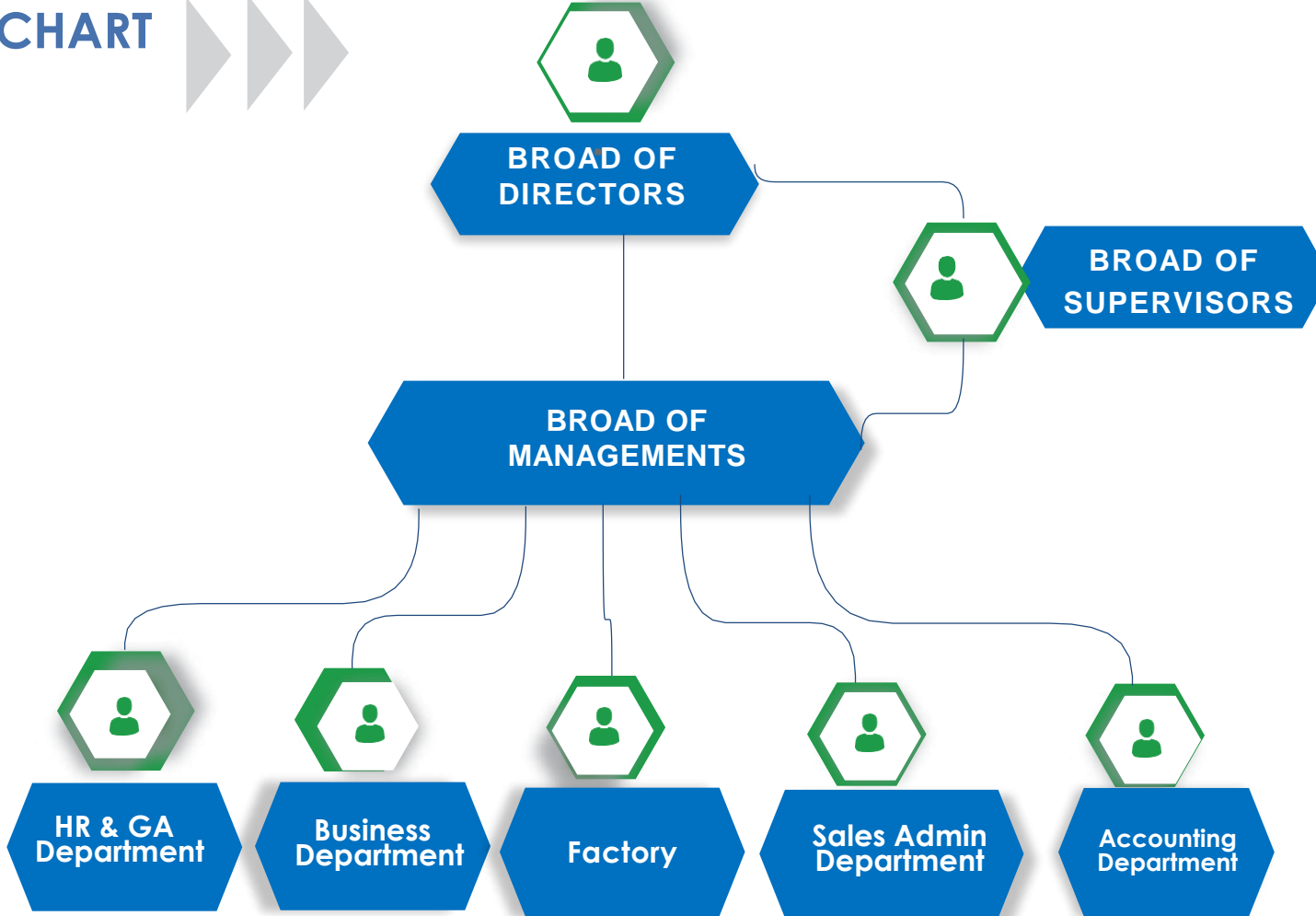


TO THE ENVIRONMENT
Environmental protection for future generations.



TO COMUNITY
Make life better and better.

ORGANIZATIONAL CHART



VISION, MISSION



VISION

Bringing to people and society advanced products and technology, with good quality, high aesthetic value and applicability, at a reasonable price to contribute to the development of the country.



MISSION

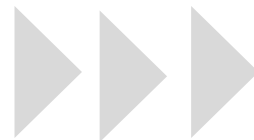
- Professionalism: Building a professional working environment.
- Innovation: Constantly thinking and bringing out new ideas and solutions.
- Reputation: Always putting reputation for product quality & brand name as our top priority



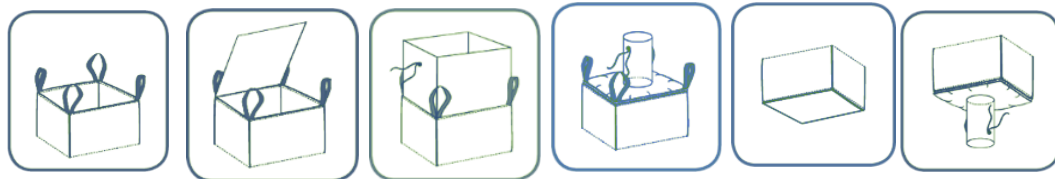
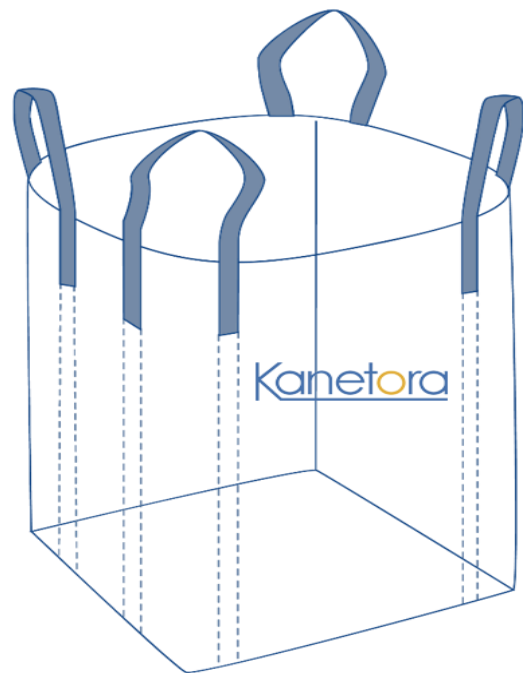
CORE VALUES

To become one of the top enterprises in Vietnam in the field of producing, printing and supplying packing materials.

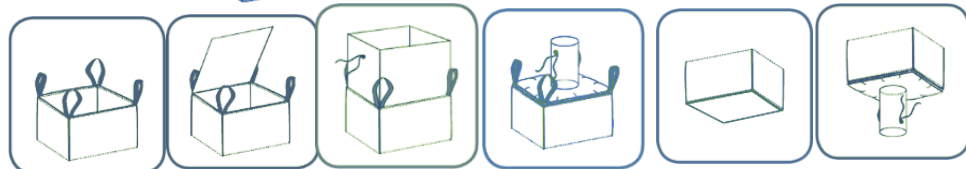
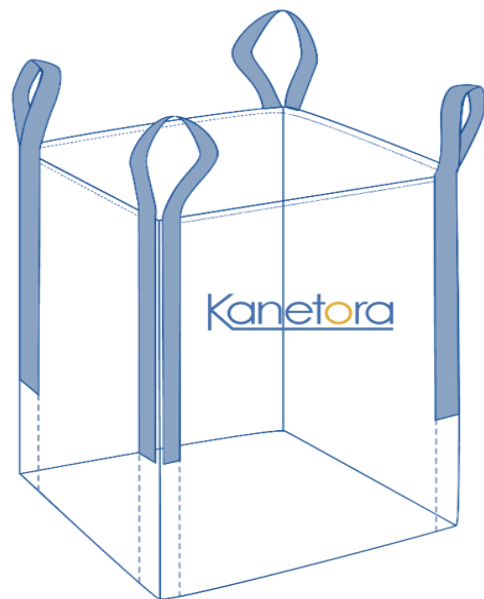
OUR PRODUCTS



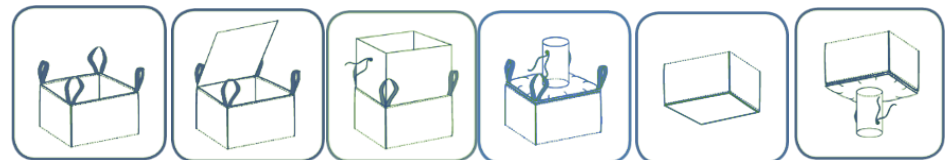
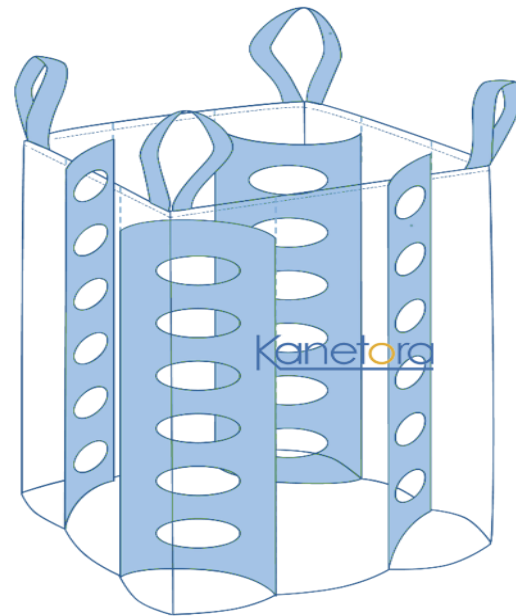
TUBULAR BAG



U-PANEL BAG



BAFFLE BAG



SLING BELT BAG



4 PANEL BAG



SLING BULK BAG

MACHINES



PP, PE Yarn
03 machines



Fabric/ Belt Cutter
05 machines



Weaving machines
60 machines



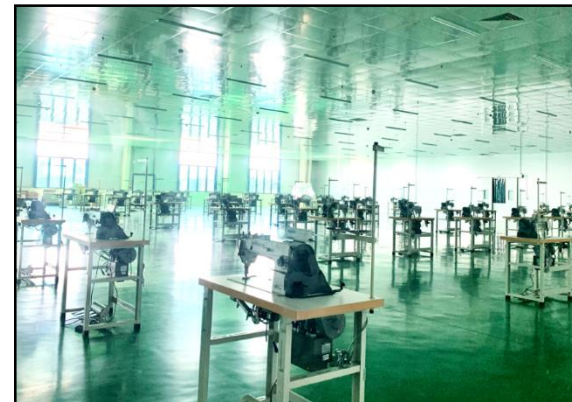
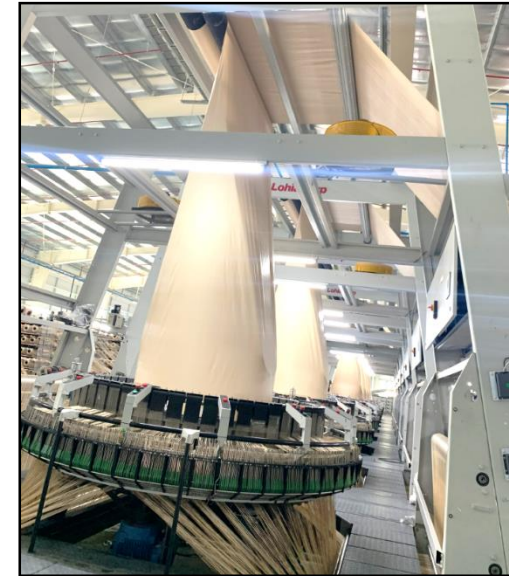
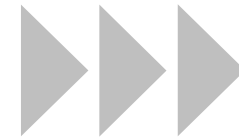
Lock Sewing
320 machines



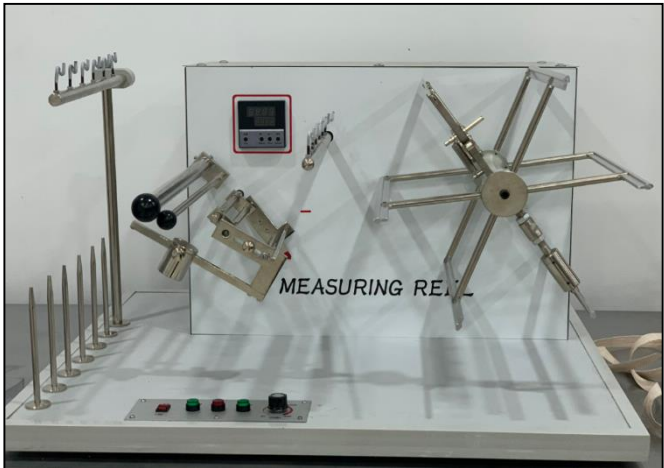
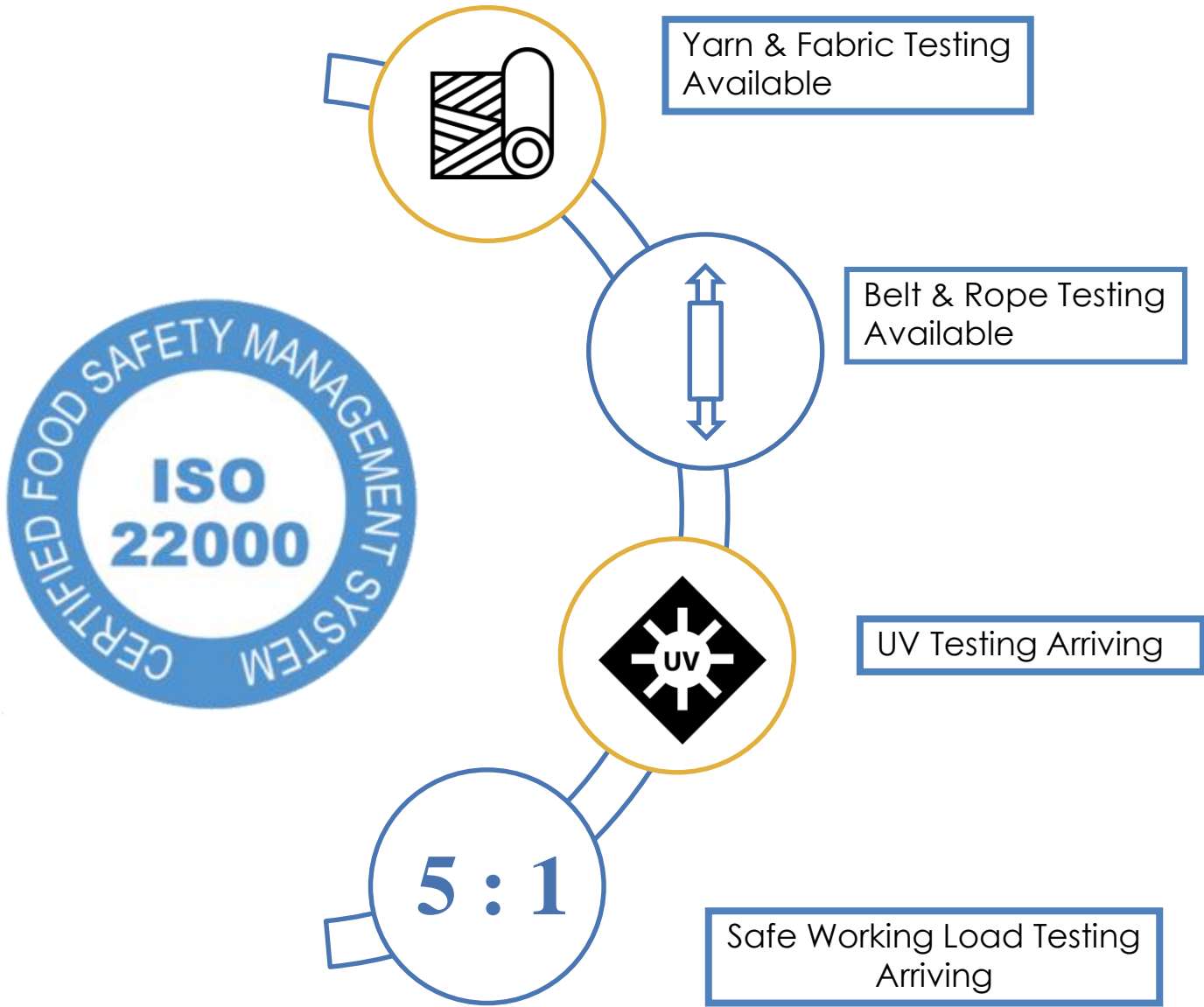
Laminated machines
02 machines



Printer machines
04 machines



LABORATORY



CLEAN ROOM

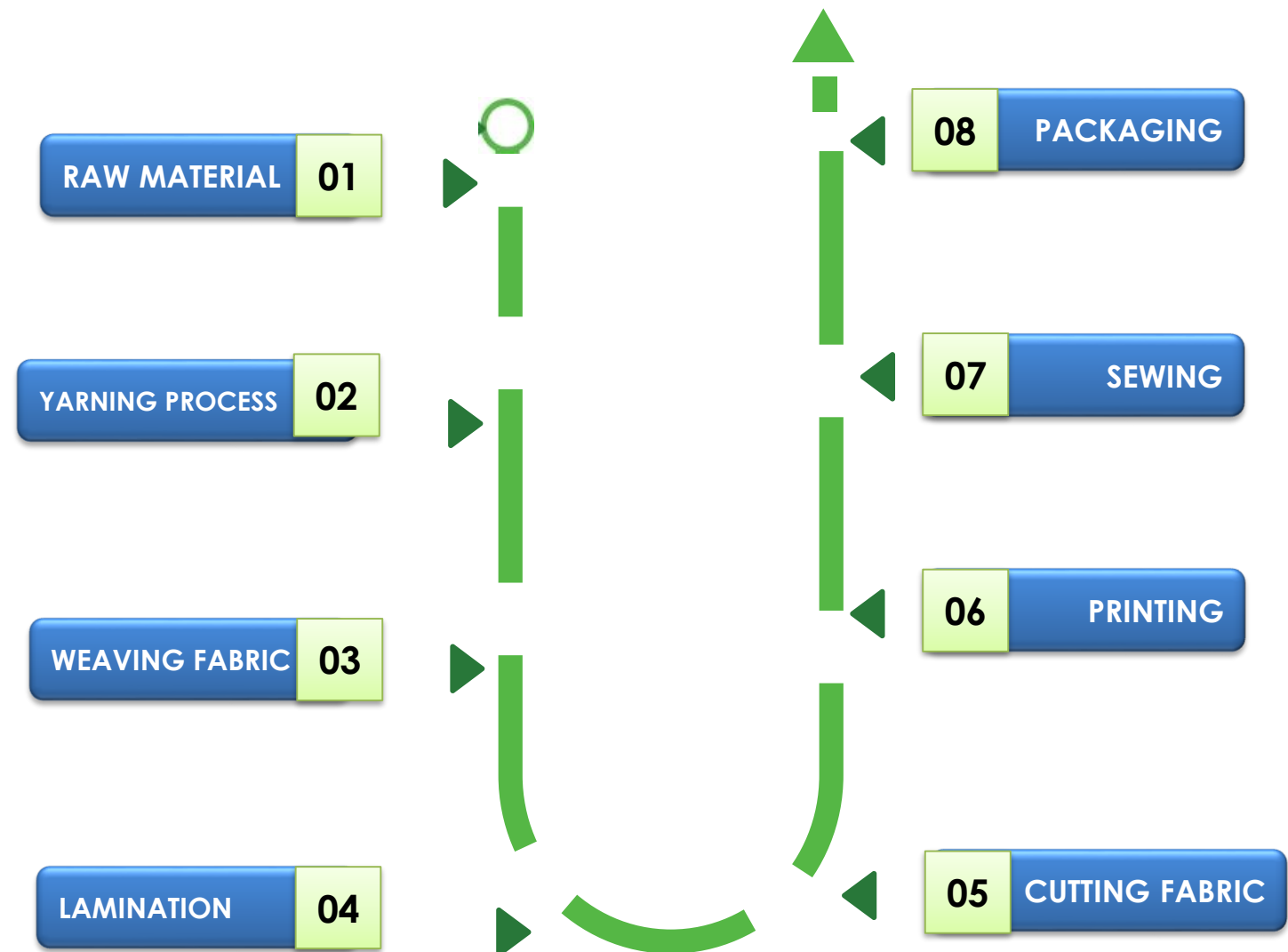


- ✓ Cleanrooms Class 10,000, can be used for the production of sterile injectable drugs, assembling hydraulic, pneumatic equipments, actuator valves, timing devices and high-quality actuators.



- ✓ Conveyor belt system to transport products
- ✓ Airwash cleaning machines, , metal detectors

PRODUCTION LINE



REPORT FORM

[illegible][illegible]

QUALITY STANDARDS

QUALITY STANDARDS (TIÊU CHUẨN CHẤT LƯỢNG)							
No (Stt)	Production (Tên sản phẩm)	Mesh (Mật độ dệt)	Weft/ Warp (Dọc/ Ngang)	Fabric Tensile Strength (Lực vải) kgf	Yarn Tensile Strength (Lực sợi) kgf	Elongation (Độ giãn) %	Quantitative (Trọng lượng) g/m²
1	PP 1650D	15 x 15	Dọc (Weft)	≥ 220	≥ 8.25	15- 20	220 ± 5%
			Ngang (Warp)	≥ 208	≥ 7.43		
2	PP 1600D	14 x 14	Dọc (Weft)	≥ 210	≥ 8.0	15- 20	202 ± 5%
			Ngang (Warp)	≥ 200	≥ 7.2		
3	PP 1500D	14 x 14	Dọc (Weft)	≥ 196	≥ 7.5	15- 20	195 ± 5%
			Ngang (Warp)	≥ 176	≥ 6.75		
4	PP 1450D	14 x 14	Dọc (Weft)	≥ 180	≥ 7.25	15- 20	183 ± 5%
			Ngang (Warp)	≥ 170	≥ 6.53		
5	PP 1450D	14 x 13	Dọc (Weft)	≥ 180	≥ 7.25	15- 20	176 ± 5%
			Ngang (Warp)	≥ 170	≥ 6.53		
6	PP 1350D	14 x 13	Dọc (Weft)	≥ 170	≥ 6.75	15- 20	162 ± 5%
			Ngang (Warp)	≥ 160	≥ 6.1		
7	PP 1300D	14 x 12	Dọc (Weft)	≥ 160	≥ 6.5	15- 20	152 ± 5%
			Ngang (Warp)	≥ 130	≥ 5.85		
8	PP 1250D	13 x 12	Dọc (Weft)	≥ 150	≥ 6.25	15- 20	140 ± 5%
			Ngang (Warp)	≥ 126	≥ 5.63		
9	PP 1000D	10 x 10	Dọc (Weft)	≥ 94	≥ 5.0	15- 20	100 ± 5%
			Ngang (Warp)	≥ 84	≥ 4.5		

Belt Tensile Strength (Tiêu chuẩn lực đai)							
No (Stt)	Type (Loại)	Width (Bền đai)	Denier- yarns (DA- Số sợi)	Belt Tensile Strength (Lực vải) kgf	Yarn Tensile Strength (Lực sợi) kgf	Elongation (Độ giãn) %	Quantitative (Trọng lượng) g/m ²
1	PP	W50	2200D x 85 pcs	≥ 680 Kgf	≥ 10 kgf	15- 20	20 ± 5%
2	PP	W50	2200D x 135 pcs	≥ 1080 Kgf	≥ 10 kgf	15- 20	35 ± 5%
3	PP	W70	2200D x 162 pcs	≥ 1300 Kgf	≥ 10 kgf	15- 20	42 ± 5%
4	PP	W70	2200D x 173 pcs	≥ 1400 Kgf	≥ 10 kgf	15- 20	45 ± 5%
5	PP	W80	2200D x 193 pcs	≥ 1550 Kgf	≥ 10 kgf	15- 20	50 ± 5%
6	PP	W100	2200D x 212 pcs	≥ 1700 Kgf	≥ 10 kgf	15- 20	55 ± 5%
9	PP	W100	2200D x 231 pcs	≥ 1900 Kgf	≥ 10 kgf	15- 20	60 ± 5%
10	Mono	W50	6000D x 35 pcs	≥ 800 Kgf		15- 20	25 ± 5%
11	Mono	W50	6000D x 49 pcs	≥ 1300 Kgf		15- 20	35 ± 5%
12	Mono	W70	6000D x 59 pcs	≥ 1600 Kgf		15- 20	42 ± 5%
13	Mono	W70	6000D x 64 pcs	≥ 1750 Kgf		15- 20	45 ± 5%
14	Mono	W80	6000D x 71 pcs	≥ 2000 Kgf		15- 20	50 ± 5%
15	Mono	W100	6000D x 77 pcs	≥ 2200 Kgf		15- 20	55 ± 5%
16	Mono	W100	6000D x 85 pcs	≥ 2300 Kgf		15- 20	60 ± 5%

No (Stt)	Materials (Vật tư)	Details (Chi tiết)	Tensile Strength (Lực kéo)
1	PP TAPE	W20- 5gr	75 Kgf
2	PP TAPE	W40- 10gr	130 Kgf
3	PP Rope	D5- 10gr	4.8 Kgn
4	PP Rope	D8- 32gr	11.9 Kgn
5	PP Rope	D10- 48gr	13.2 Kgn
6	PP Rope	D12- 63gr	21.2 Kgn
7	PP Rope	D14- 95gr	25.9 Kgn

WHY YOU SHOULD CHOOSE US



With advanced technology, cutting edge equipment, we confidently affirm our superior products and top after-sales service. KANETORA VIETNAM committed to provide customers with the latest solutions to optimally solve problems in manufacturing, printing and supplying packaging, plastic packing from all kinds of materials.

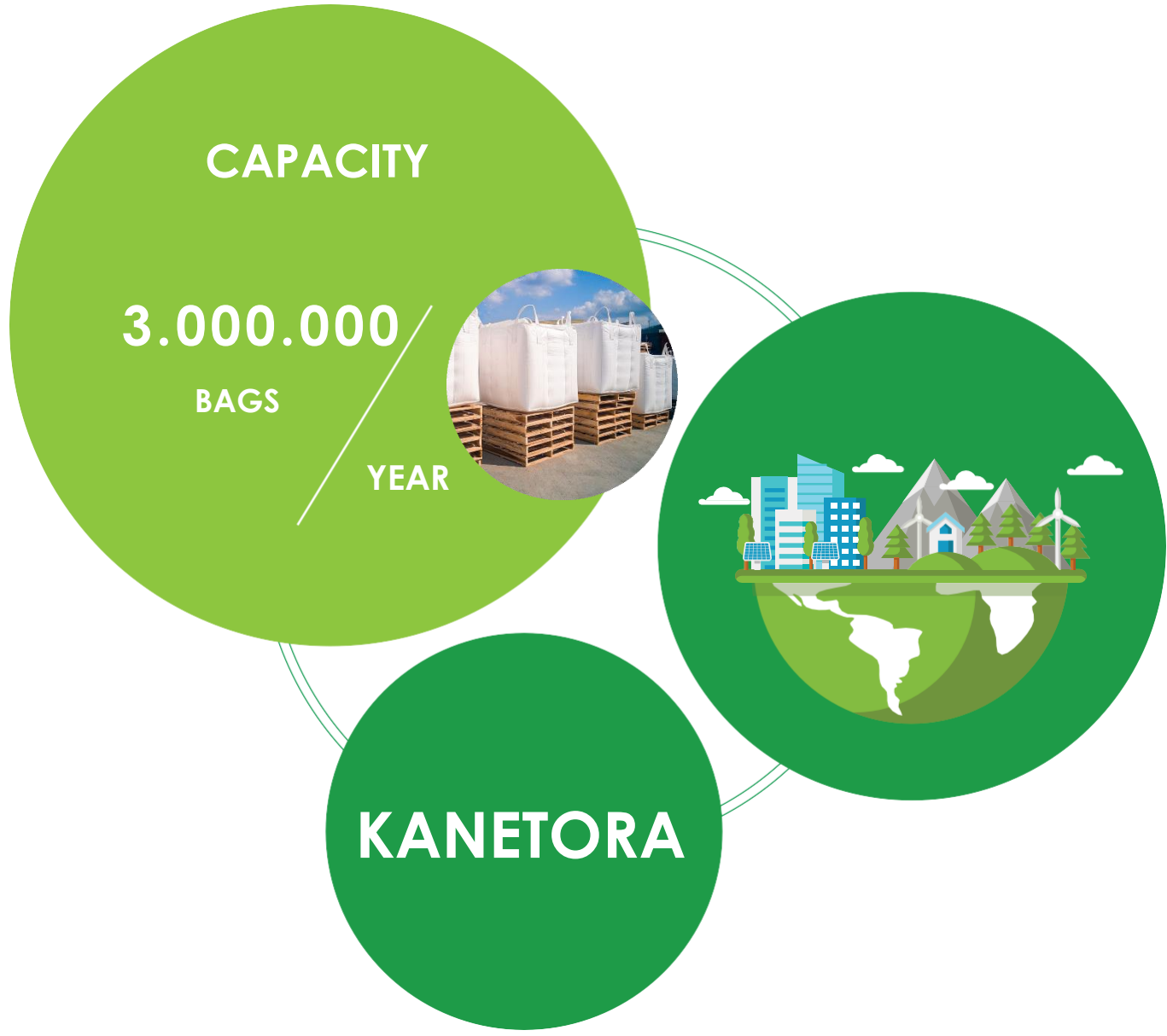


We provide the best products and solutions for customers.

Product quality has been tested and trusted by customers.

Ensuring fast, thoughtful and enthusiastic support 24/7.

PRODUCTION CAPACITY



With a large factory area located in an area with abundant material all year round, fully automated production lines, highly proficient staff, KANETORA ensures to meet the technical and quality criteria of products supplying for the market.



Thank you !



Kanetora Vietnam.,JSC
+84 (0) 24 7303 3998
info@kanetora.vn

Sales Department
+84 (0) 86 854 4998
sales@kanetora.vn

Kanetora

CORPORATE OFFICE

23rd FL Discovery Complex, 302
Cau Giay Street, Dich Vong Ward,
Cau Giay District, Hanoi, Vietnam.
Ph. +84 (0) 24 7303 3998

FACTORY

Cau Mai, My Thinh Commune,
My Loc District, Nam Dinh
Province, Vietnam
Ph. +84 (0) 24 7303 3998